

# Chilham St Mary's CEP School Newsletter

## Tuesday 4<sup>th</sup> September

Email: [office@chilham.kent.sch.uk](mailto:office@chilham.kent.sch.uk)

Website: [www.chilham.kent.sch.uk](http://www.chilham.kent.sch.uk)

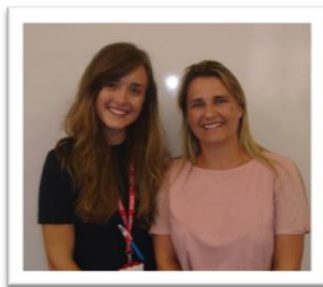
### WELCOME BACK!!

Welcome back everyone! We hope you all had a great summer break and were able to relax and enjoy being with your children. We would like to extend a very warm welcome to our new pupils and parents that have recently joined us. We hope both you and your children, like us, are looking forward to an exciting and fun filled year at Chilham!

### New Members of Staff

We are sure you will join us in welcoming our new members of staff:

- Mrs James & Mrs Talbot in Wrens as before.
- Miss Uttley is our new class teacher in Herons. She will be supported by Mrs Fincham as her Teaching Assistant.
- Mr Mankelow has joined us as our new Martins class teacher, with Mrs Smith
- Mr Geeves, Miss Harris & Mrs Emery in Peacocks as before.



Miss Uttley & Mrs Fincham



Mr Mankelow & Mrs Smith

### Start of Term Reminders

Here are few things to remember at the beginning of term:

#### **Drop Off and Collection Arrangements**

The school gates and office open at 8.35am. Children are supervised by a member of staff on the playground until 8.45am when they go into their classrooms. All children must be here by 8.50am to ensure they are in class ready for the start of the day and registration at 8.55am. Children arriving after the gates have been locked MUST be signed in at the school office by an adult and a reason provided.

If you need to drop your child off before 8.35am this must be applied for in writing at the start of each term, we are unable to admit children early on an ad-hoc basis. Unfortunately, for Health and Safety reasons we are not able to accommodate large

numbers of children; therefore, please only request to use this facility if it is absolutely essential. Many thanks for your understanding.

### **School Meals**

School meals are provided by Caterlink. The price remains at £2.05 per meal (£10.25 per week or you may pay for the term), and must be paid for via the school office in a named sealed envelope. You may make payment by cash or cheque – please make cheques payable to Caterlink Ltd.

**Caterlink are an external provider and therefore meals must be paid for either in advance or on the day.** Payment may occasionally be made at the end of the day with prior arrangement via the school office. Menus are available from the school office.

### **School Uniform Reminder**

#### **SCHOOL UNIFORM**

<b>Item of Clothing</b>	<b>Colour</b>
<b>Tops</b>	
Shirt/Blouse/Polo Shirt	White/Red, <i>preferably white</i>
Sweatshirt/Cardigan/Jumper	Red
<b>Bottoms</b>	
Trousers or Shorts	Grey
Skirt (no shorter than knee length)	Grey
<b>Dresses</b>	
Pinafore Dress	Grey
Summer Dress	Red & White Stripe / Check
<b>Footwear</b>	
Flat, smart shoes (open toes sandals are not appropriate for school)	Black
Socks/tights	White /Grey
<b>Physical Education</b>	
Team Colour PE T-Shirt (preferably with house logo)	House Colour
PE Jumper	
Plain Shorts / Skort	Black / Navy
Plain Jogging Bottoms	Black / Navy
Plimsolls (for indoors)	Black
Trainers (for outdoors)	
PE Bag with Draw String	
Children should not wear tights for PE, so please bring a spare pair of socks	

### Accessories

In the interest of safety, earrings should be of the small sleeper or stud variety. Earrings must be removed for PE sessions, taping of ears is not acceptable for health and safety reasons. If a child cannot remove their own earrings it should be done so at home on the day the child has PE as staff are not permitted to remove earrings. Children will take part in a related activity if their earrings are not removed on such days.

All other jewellery and make up must not be worn in school.

Shoulder length hair must be tied back with a plain band. Large flowers and hair fashion accessories must not be worn in school. Small discrete bows and plain headbands preferably in school colours are acceptable.

### Names in Uniforms

Please ensure your child's uniform and school equipment are all named. We already have quite a collection of unnamed uniform in lost property!

### PE Kit

PE is a compulsory part of the curriculum so we would be very grateful if you could ensure that your child has the correct PE kit in school at all times. Ideally, they should be sent in at the start of term and taken home at the end of term – we will send kits home for washing in between times if they really need it! Thank you for your co-operation.

### After School Clubs

These start next week. We will send home information and the sign up forms tomorrow.



### DATES FOR YOUR DIARY 2017/2018

#### TERM 1

#### Monday 4<sup>th</sup> September 2017

Children return to school

#### Thursday 7<sup>th</sup> September

Year 6 PESE (11+) Tests

#### Wednesday 18<sup>th</sup> October

Open afternoon for parents

3.15pm

#### Thursday 19<sup>th</sup> October

Harvest Celebration at Chilham

Church

2.00pm

#### Friday 20<sup>th</sup> October

**END OF TERM 1**

#### TERM 2

#### Monday 30<sup>th</sup> October

Children return to school

#### Monday 20<sup>th</sup> November

Parent Consultations

3.30pm – 6.30pm

#### Tuesday 21<sup>st</sup> November

Parent Consultations

3.30pm – 6.00pm

#### Wednesday 13<sup>th</sup> December

Chilham Nativity at Chilham Church

2.00pm

#### Wednesday 20<sup>th</sup> December

**END OF TERM 2**



**TERM 3**

**Monday 8<sup>th</sup> January 2018**

Children return to school

**Monday 5<sup>th</sup> February**

Open Afternoon for parents

3.15pm

**Friday 9<sup>th</sup> February**

**END OF TERM 3**

**TERM 4**

**Tuesday 20<sup>th</sup> February**

Children return to school

**Monday 26<sup>th</sup> March**

Easter Service at Chilham Church

2pm

**Tuesday 27<sup>th</sup> March**

Parent Consultations

3.30pm – 6.30pm

**Wednesday 28<sup>th</sup> March**

Parent Consultations

3.30pm – 6.00pm

**Thursday 29<sup>th</sup> March**

**END OF TERM 4**

**TERM 5**

**Monday 16<sup>th</sup> April**

Children return to school

**Tuesday 22<sup>nd</sup> May**

Open Afternoon for parents

**Thursday 24<sup>th</sup> May**

**END OF TERM 5**

**TERM 6**

**Tuesday 5<sup>th</sup> June**

Children return to school

**Thursday 7<sup>th</sup> June**

Y5 Parent Consultations (PESE- 11+)

**Friday 29<sup>th</sup> June**

Sports Day (pm)

**Thursday 12<sup>th</sup> July**

Junior Performance

6.00pm

**Monday 23<sup>rd</sup> July**

Leavers Assembly (pm)

**Tuesday 24<sup>th</sup> July**

**END OF TERM 6 AND ACADEMIC YEAR**

**2PM**

**INSET Days 2017/2018 (Teacher Training Days)**

Thursday 4<sup>th</sup> January 2018

Friday 5<sup>th</sup> January 2018

Monday 19<sup>th</sup> February 2018

Friday 25<sup>th</sup> May

Monday 4<sup>th</sup> June 2018

**All dates are subject to change.**